

SEMIFINALS

Male

vs.

Marion County

March 20, 1993

VISITORS (Last Name, First)

NO.	MALE	Tot FG		3-POINT		FT	FTA	Rebounds			PF	TP	A	TO	BLK	S	TIME	
		FG	FGA	FG	FGA			OFF	DEF	TOT								
11	WORDLOW, ANTUAN	3	8	1	1	0	0	2	4	6	2	7	2	2	0	0	27:15	
50	MARTIN, DAVID	7	10	0	0	3	4	2	0	2	3	17	1	0	1	0	28:28	
25	OSBORNE, JASON	11	22	2	5	6	9	6	7	13	2	30	1	1	2	2	32:00	
22	EDELEN, DANNY	1	5	0	4	0	0	0	2	2	3	2	9	4	0	2	26:44	
32	SHEE, DAVID	2	7	2	5	4	4	3	2	5	2	10	0	0	0	2	32:00	
55	MOORE, DAMON	0	1	0	0	0	0	1	0	1	1	0	1	0	0	0	3:14	
52	GIVENS, NATE	0	0	0	0	0	0	0	0	0	0	0	0	1	0	1	5:16	
20	BIBB, DON	1	2	0	1	0	0	1	0	1	0	2	0	2	0	0	5:03	
TEAM REBOUNDS (INCLUDED IN TOTALS)																		
TOTALS		25	55	5	16	13	17	16	16	32	13	68	14	10	3	7	160	

TOTAL FG	1st HALF	7/13	53.8%	2nd HALF	18/42	42.9%	GAME	25/55	45.5%	DEADBALL	
3-POINT FG	1st HALF	0/2	0.0%	2nd HALF	5/14	35.7%	GAME	5/16	31.3%	REBOUNDS	1
FREE THROWS	1st HALF	3/3	100.0%	2nd HALF	10/14	71.4%	GAME	13/17	76.5%		

HOME (Last Name, First)

NO.	MARION COUNTY	Tot FG		3-POINT		FT	FTA	Rebounds			PF	TP	A	TO	BLK	S	TIME	
		FG	FGA	FG	FGA			OFF	DEF	TOT								
04	CRUME, ALEX	1	2	0	0	0	0	1	0	1	1	2	0	0	0	0	7:44	
21	SCOTT, ELTON	5	11	2	4	4	4	3	5	8	3	16	6	4	1	0	32:00	
51	O'DANIEL, STUART	1	1	0	0	0	0	0	0	0	2	2	0	2	0	0	9:17	
15	DOUGLAS, MICHAEL	3	13	3	12	0	0	1	1	2	2	9	2	0	0	1	32:00	
25	EPPS, ANTHONY	8	16	6	14	1	3	3	1	4	2	23	4	2	0	2	32:00	
31	ENGLISH, DERRICK	8	10	0	0	0	0	4	5	9	1	16	3	0	1	0	24:16	
10	BIGGERS, VINCENT	2	5	0	0	1	2	5	1	6	3	5	0	2	0	3	22:43	
TEAM REBOUNDS (INCLUDED IN TOTALS)																		
TOTALS		28	58	11	30	6	9	17	14	31	14	73	15	10	2	6	160	

TOTAL FG	1st HALF	8/17	47.1%	2nd HALF	20/41	48.8%	GAME	28/58	48.3%	DEADBALL	
3-POINT FG	1st HALF	5/12	41.7%	2nd HALF	6/18	33.3%	GAME	11/30	36.7%	Rebounds	3
FREE THROWS	1st HALF	0/0	0.0%	2nd HALF	6/9	66.7%	GAME	6/9	66.7%		

OFFICIALS: C. B. AKINS, MONDO ANGELUCCI, ALT-A. CASEY
 Technicals: None

SCORE BY PERIODS

MALE	17	17	16	18	=	68
MARION COUNTY	21	15	17	20	=	73

Attendance: 16,625

COMMENTS: POINTS OFF TURNOVERS

MALE 12 MARION COUNTY

SECOND CHANCE POINTS

17 MARION COUNTY

13

13 MALE

Produced by the KHSAA Sweet Sixteen Stat Crew with FINAL III - a Product of LEXICON SPORTS

MALE "BULLDOGS" vs MARION COUNTY "KNIGHTS"
1st Half Play by Play

PAGE : 1

Tip off at 11:55 A.M. on 03/20/93 at BOYS STATE TOURNEY GM 14
Produced by the KHSAA Sweet Sixteen Stat Crew with FINAL III - a Product of LEXIC

Player	Team	MARION COUNTY	Time	Score	MALE	Player	Team
CRUME, ALEX, SCOTT, ELTON,		O'DANIEL, STUART, DOUGLAS, MICHAEL, EPPS, ANTHONY				WORDLOW, ANTUAN, MARTIN, DAVID, OSBORNE, JASON, EDELEN, DANNY, SHEE, DAVID	
1-2	50.0%	1-2 50.0%	3 pt 22 ft Left Base Line Jump shot by DOUGLAS, MICHAEL Assist by SCOTT, ELTON	1 7:17	*3-0		
1		1	Foul on SCOTT, ELTON	1 6:52			
1		1		1 6:52	3-2*	SHEE, DAVID, 2 Free Throws made both	2-2 100% 2-2 100%
1		2	Foul on CRUME, ALEX	1 6:23			
1-1	100%	2-4 50.0%	3 pt 23 ft Straight Away Jump shot by SCOTT, ELTON Assist by EPPS, ANTHONY	1 5:51	*6-2		
1		2		1 5:38	6-4*	Driving Layup by MARTIN, DAVID	1-2 50.0% 1-4 25.0%
1-1	100%	3-6 50.0%	4 ft Lane Follow by CRUME, ALEX	1 5:24	*8-4		
1		3	Foul on O'DANIEL, STUART	1 5:14	8-6*	Layup Off Fast Break by MARTIN, DAVID Assist by WORDLOW, ANTUAN	2-3 66.6% 2-5 40.0%
1-1	100%	4-9 44.4%	Driving Layup by O'DANIEL, STUART	1 4:54	8-8*	Layup Off Fast Break by OSBORNE, JASON Assist by EDELEN, DANNY	1-3 33.3% 3-6 50.0%
2-4	50.0%	5-10 50.0%	3 pt 24 ft Left Base Line Jump shot by DOUGLAS, MICHAEL Assist by EPPS, ANTHONY	1 4:54			1 2
2		3	Sub In: ENGLISH, DERRICK Out: CRUME, ALEX Sub In: BIGGERS, VINCENT Out: O'DANIEL, STUART	1 4:54	8-9*	OSBORNE, JASON, 1 Free Throw made	1-1 100% 3-3 100%
1-4	25.0%	6-14 42.8%	3 pt 22 ft Right Base Line Jump shot by EPPS, ANTHONY	1 3:47	*10-9		
2-5	40.0%	7-16 43.7%	3 pt 23 ft Right Angle Jump shot by EPPS, ANTHONY Assist by DOUGLAS, MICHAEL	1 3:29	10-11*	14 ft Lane Jump shot by WORDLOW, ANTUAN Assist by EDELEN, DANNY	1-1 100% 4-8 50.0%
1		4	Layup Off Fast Break by EPPS, ANTHONY	1 3:14	*13-11		2 3
3-6	50.0%	8-17 47.0%	Layup Off Fast Break by EPPS, ANTHONY	1 3:02			
1		4		1 3:02			
1-4	25.0%	6-14 42.8%	3 pt 22 ft Right Base Line Jump shot by EPPS, ANTHONY	1 2:04	13-13*	12 ft Lane Jump shot by OSBORNE, JASON Assist by EDELEN, DANNY	2-5 40.0% 5-10 50.0%
2-5	40.0%	7-16 43.7%	3 pt 23 ft Right Angle Jump shot by EPPS, ANTHONY Assist by DOUGLAS, MICHAEL	1 1:40	*16-13		3 4
1		4	Layup Off Fast Break by EPPS, ANTHONY	1 1:30	16-15*	Layup Off Fast Break by MARTIN, DAVID Assist by EDELEN, DANNY	3-4 75.0% 6-11 54.5%
3-6	50.0%	8-17 47.0%	Layup Off Fast Break by EPPS, ANTHONY	1 0:30	*19-15		4 5
1		4		1 0:10	*21-15		
3-6	50.0%	8-17 47.0%	Layup Off Fast Break by EPPS, ANTHONY	1 0:00	21-17*	18 ft Right Angle Jump shot by WORDLOW, ANTUAN	2-2 100% 7-13 53.8%

MALE "BULLDOGS" vs MARION COUNTY "KNIGHTS"
1st Half Play by Play

Player	Team	MARION COUNTY
BIGGERS,VINCENT,SCOTT, ELTON,ENGLISH,DERRICK,DOUGLAS,MICHAEL,EPPS, ANTHONY		
1-2 3	50.0% 9-18 5	50.0% 4 ft Lane Jump shot by ENGLISH,DERRICK Assist by EPPS, ANTHONY
2-3	66.6% 10-22	45.4% 10 ft Right Side Follow by ENGLISH,DERRICK
3-4 4	75.0% 11-25 6	44.0% 14 ft Lane Jump shot by ENGLISH,DERRICK Assist by EPPS, ANTHONY
2-4 1 1	50.0% 12-26 7 4	46.1% 3 pt 22 ft Right Side Jump shot by SCOTT, ELTON Assist by ENGLISH,DERRICK Foul on EPPS, ANTHONY
4-9 2	44.4% 13-27 8	48.1% 3 pt 22 ft Straight Away Jump shot by EPPS, ANTHONY Assist by DOUGLAS,MICHAEL
1-2 4-5 1	50.0% 1-2 50.0% 80.0% 14-28 50.0%	BIGGERS,VINCENT, 2 Free Throws made 1st missed 2nd 6 ft Lane Follow by ENGLISH,DERRICK Foul on ENGLISH,DERRICK Sub In: O'DANIEL,STUART Out: BIGGERS,VINCENT
D-1	Tot-1	D-1 Tot-15 Rebound by ENGLISH,DERRICK

PAGE : 2

Tip off at 11:55 A.M. on 03/20/93 at BOYS STATE TOURNEY GM 14
Produced by the KHSAA Sweet Sixteen Stat Crew with FINAL III - a Product of LEXICON

Time	Score	MALE	Player	Team
WORDLOW, ANTUAN,MARTIN, DAVID,OSBORNE, JASON ,EDELEN, DANNY,SHEE, DAVID				
2 7:54	21-20*	3 pt 22 ft Left Angle Jump shot by SHEE, DAVID Assist by EDELEN, DANNY	1-1 5	100% 8-14 57.1%
2 7:40	*23-20			
2 7:10		Foul on OSBORNE, JASON	1	1
2 6:53		Foul on MARTIN, DAVID	1	2
2 6:38	*25-20			
2 6:13	25-22*	4 ft Lane Follow by OSBORNE, JASON	3-8	37.5% 9-19 47.3%
2 5:34	25-24*	4 ft Lane Turnaround by MARTIN, DAVID	4-5	80.0% 10-20 50.0%
2 4:58	*27-24			
2 4:11	27-27*	3 pt 22 ft Straight Away Jump shot by SHEE, DAVID Assist by EDELEN, DANNY	2-3 6	66.6% 11-22 50.0%
2 3:47	*30-27			
2 3:27				
2 3:27	30-28*	Sub In: MOORE, DAMON Out: MARTIN, DAVID OSBORNE, JASON , 2 Free Throws made 1st missed 2nd	2-3	66.6% 4-5 80.0%
2 3:04	*33-28			
2 2:50	33-30*	10 ft Left Angle Jump shot by OSBORNE, JASON Assist by MOORE, DAMON	4-9 1 2	44.4% 12-23 52.1%
2 2:12		Foul on OSBORNE, JASON		
2 2:12		Sub In: GIVENS, NATE Out: EDELEN, DANNY		
2 2:12		Sub In: BIBB, DON Out: WORDLOW, ANTUAN		
2 2:12	*34-30			
2 2:09	*36-30			
2 1:33				
2 1:33				
2 1:33	36-32*	Sub In: MARTIN, DAVID Out: MOORE, DAMON OSBORNE, JASON , 2 Free Throws made both	4-5 5-10	80.0% 50.0% 6-7 13-27 85.7% 48.1%
2 0:57	36-34*	9 ft Lane Jump shot by OSBORNE, JASON	4-6	66.6% 13-28 46.4%
2 0:00		Driving Layup by MARTIN, DAVID, missed		
2 0:00				

Official Boxscore * OFFICIAL FIRST HALF *

Date: 03-20-93 Site:BOYS STATE TOURNEY GM 14

VISITORS (Last Name, First)

NO.	MALE	Tot		3-POINT		FT	FTA	Rebounds			PF	TP	A	TO	BLK	S	TIME
		FG	FGA	FG	FGA			OFF	DEF	TOT							
11	WORDLOW, ANTUAN	2	4	0	0	0	0	1	4	5	0	4	1	1	0	0	13:48
50	MARTIN, DAVID	4	6	0	0	0	0	1	0	1	1	8	0	0	0	0	14:06
25	OSBORNE, JASON	5	10	0	0	4	5	2	1	3	2	14	0	0	0	0	16:00
22	EDELEN, DANNY	0	2	0	2	0	0	0	2	2	0	0	6	2	0	1	13:48
32	SHEE, DAVID	2	4	2	2	2	2	2	0	2	0	8	0	0	0	2	16:00
55	MOORE, DAMON	0	1	0	0	0	0	1	0	1	0	0	0	0	0	0	1:54
52	GIVENS, NATE	0	0	0	0	0	0	0	0	0	0	0	0	0	0	1	2:12
20	BIBB, DON	0	1	0	1	0	0	0	0	0	0	0	0	0	0	0	2:12
TEAM REBOUNDS (INCLUDED IN TOTALS)								1	7	8							
TOTALS		13	28	2	6	6	7	8	7	15	3	34	8	3	0	4	80
TOTAL FG 1st HALF		7/13	53.8%	2nd HALF		6/15	40.0%	GAME		13/28	46.4%	DEADBALL					
3-POINT FG 1st HALF		0/2	0.0%	2nd HALF		2/4	50.0%	GAME		2/6	33.3%	REBOUNDS				0	
FREE THROWS 1st HALF		3/3	100.0%	2nd HALF		3/4	75.0%	GAME		6/7	85.7%						

HOME (Last Name, First)

NO.	MARION COUNTY	Tot		3-POINT		FT	FTA	Rebounds			PF	TP	A	TO	BLK	S	TIME
		FG	FGA	FG	FGA			OFF	DEF	TOT							
04	CRUME, ALEX	1	1	0	0	0	0	1	0	1	1	2	0	0	0	0	4:58
21	SCOTT, ELTON	2	4	2	3	0	0	1	3	4	1	6	1	2	0	0	16:00
51	O'DANIEL, STUART	1	1	0	0	0	0	0	0	0	1	2	0	1	0	0	6:31
15	DOUGLAS, MICHAEL	2	7	2	6	0	0	1	1	2	0	6	2	0	0	0	16:00
25	EPPS, ANTHONY	4	10	3	9	0	0	1	1	2	1	11	4	1	0	1	16:00
31	ENGLISH, DERRICK	4	5	0	0	0	0	2	2	4	1	8	1	0	0	0	11:02
10	BIGGERS, VINCENT	0	1	0	0	1	2	2	0	2	0	1	0	0	0	1	9:29
TEAM REBOUNDS (INCLUDED IN TOTALS)								8	7	15	5	36	8	4	0	2	80
TOTALS		14	29	7	18	1	2	8	7	15	5	36	8	4	0	2	80
TOTAL FG 1st HALF		8/17	47.1%	2nd HALF		6/12	50.0%	GAME		14/29	48.3%	DEADBALL					
3-POINT FG 1st HALF		5/12	41.7%	2nd HALF		2/6	33.3%	GAME		7/18	38.9%	Rebounds				2	
FREE THROWS 1st HALF		0/0	0.0%	2nd HALF		1/2	50.0%	GAME		1/2	50.0%						

OFFICIALS: C. B. AKINS, MONDO ANGELUCCI, ALT-A. CASEY
 Technicals: None

SCORE BY PERIODS			
MALE	17	17	= 34
MARION COUNTY	21	15	= 36

Attendance: 16,625

COMMENTS: POINTS OFF TURNOVERS

SECOND CHANCE POINTS

MALE 7 MARION COUNTY

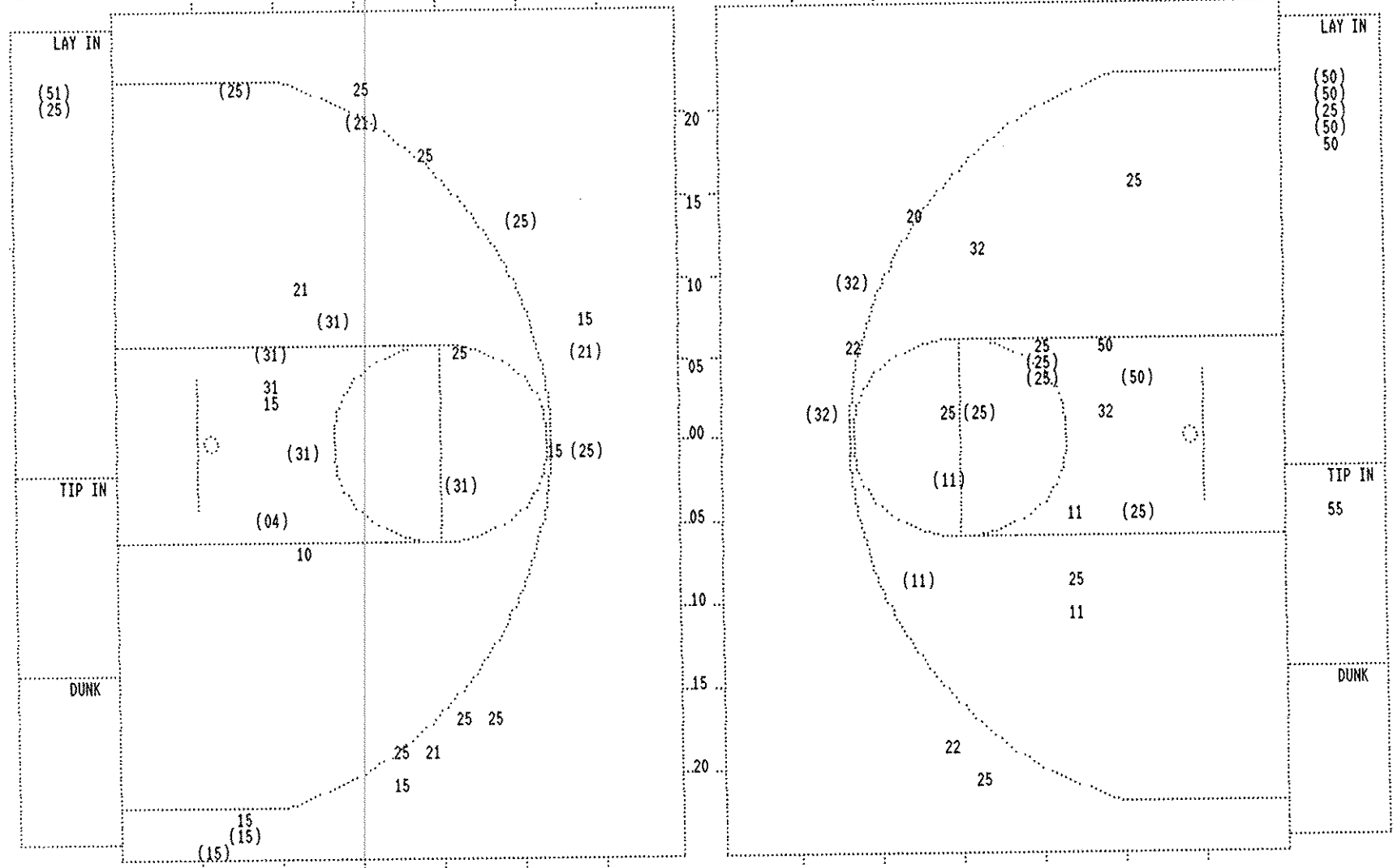
2 MALE

6 MARION COUNTY

9

Produced by the KHSAA Sweet Sixteen Stat Crew with FINAL III - a Product of LEXICON SPORTS™

FIRST HALF SHOT CHART Produced by the KHSAA Sweet Sixteen Stat Crew with FINAL III - a Product of LEXICON SPORTS™



MARION COUNTY				MALE								
Player				Player			Player					
04 - CRUME, ALE	1 / 1	100.0%	10 - BIGGERS, VI	0 / 1	0.0%		11 - WORDLOW, A	2 / 4	50.0%			
21 - SCOTT, ELT	2 / 4	50.0%	31 - ENGLISH, DE	4 / 5	80.0%		50 - MARTIN, DA	4 / 6	66.6%			
51 - O'DANIEL, S	1 / 1	100.0%					25 - OSBORNE, J	5 / 10	50.0%			
15 - DOUGLAS, MI	2 / 7	28.5%					22 - EDELEN, DA	9 / 2	0.0%			
25 - EPPS, ANTH	4 / 10	40.0%					32 - SHEE, DAVI	2 / 4	50.0%			
Layups	1-9 Ft	10-15 Ft	Over 15 Ft	3 Pointers	Total		Layups	1-9 Ft	10-15 Ft	Over 15 Ft	3 Pointers	Total
2 / 2	3 / 6	2 / 3		7 / 18	14 / 29		4 / 6	3 / 6	3 / 7	1 / 3	2 / 6	13 / 28
100.0%	50.0%	66.7%		38.9%	48.3%		66.7%	50.0%	42.9%	33.3%	33.3%	46.4%

MALE "BULLDOGS" vs MARION COUNTY "KNIGHTS"
2nd Half Play by Play

Player	Team	MARION COUNTY
CRUME, ALEX	SCOTT, ELTON	O'DANIEL,STUART,DOUGLAS,MICHAEL,EPPS, ANTHONY Ball to KNIGHTS
2	1	Foul on O'DANIEL,STUART
1	2	Foul on DOUGLAS,MICHAEL Sub In: BIGGERS,VINCENT Out: CRUME, ALEX Sub In: ENGLISH,DERRICK Out: O'DANIEL,STUART
5-11	45.4%	15-35 42.8%
1-3	33.3%	16-36 44.4%
2	9	17 ft Right Angle Jump shot by EPPS, ANTHONY Layup Off Fast Break by BIGGERS,VINCENT Assist by SCOTT, ELTON
6-12	50.0%	17-39 43.5%
2	10	3 pt 22 ft Straight Away Jump shot by EPPS, ANTHONY Assist by ENGLISH,DERRICK
2	3	Foul on DOUGLAS,MICHAEL
5-6	83.3%	18-42 42.8%
3-8	37.5%	19-43 44.1%
1	4	4 ft Lane Follow by ENGLISH,DERRICK 8 ft Lane Jump shot by SCOTT, ELTON Foul on BIGGERS,VINCENT
3-12	25.0%	20-45 44.4%
3	11	3 pt 22 ft Right Side Jump shot by DOUGLAS,MICHAEL Assist by SCOTT, ELTON
7-14	50.0%	21-46 45.6%
		3 pt 22 ft Left Side Jump shot by EPPS, ANTHONY

PAGE : 1 Tip off at 11:55 A.M. on 03/20/93 at BOYS STATE TOURNEY GM 114
Produced by the KHSAA Sweet Sixteen stat crew with FINAL III - a Product of LEXI

Time	Score	MALE	Player	Team
			WORDLOW, ANTUAN, MARTIN, DAVID, OSBORNE, JASON, EDELEN, DANNY, SHEE, DAVID	
3 7:12	36-37*	3 pt 21 ft Right Side Jump shot by WORDLOW, ANTUAN Assist by EDELEN, DANNY	3-5	60.0% 14-29 48.2%
3 6:56		Foul on SHEE, DAVID	7	9
3 6:43			1	1
3 6:02	36-39*	15 ft Lane Jump shot by MARTIN, DAVID Assist by WORDLOW, ANTUAN	5-7	71.4% 15-30 50.0%
3 5:14			2	10
3 5:14				
3 5:14	36-41*	MARTIN, DAVID, 2 Free Throws made both	2-2	100% 8-9 88.8%
3 4:32	*38-41			
3 4:21	*40-41			
3 4:12	40-43*	7 ft Left Side Jump shot by MARTIN, DAVID Assist by EDELEN, DANNY	6-8	75.0% 16-33 48.4%
3 3:31		Foul on WORDLOW, ANTUAN	8	11
3 3:17	*43-43		1	2
3 3:03				
3 3:03	43-44*	MARTIN, DAVID, 1 Free Throw made	3-3	100% 9-10 90.0%
3 3:01		MARTIN, DAVID, 1 Free Throw missed	3-4	75.0% 9-11 81.8%
3 2:54	43-46*	Driving Layup by MARTIN, DAVID Assist by OSBORNE, JASON	7-9	77.7% 17-35 48.5%
3 2:23	*45-46		1	12
3 2:13	45-48*	10 ft Left Side Jump shot by OSBORNE, JASON	6-13	46.1% 18-37 48.6%
3 1:57	*47-48			
3 1:30		Foul on MARTIN, DAVID	2	3
3 1:20				
3 1:20		Sub In: MOORE, DAMON Out: MARTIN, DAVID		
3 0:55		Foul on MOORE, DAMON	1	4
3 0:50	*50-48			
3 0:26	50-50*	14 ft Lane Jump shot by OSBORNE, JASON	7-14	50.0% 19-40 47.5%
3 0:17	*53-50			

MALE "BULLDOGS" vs MARION COUNTY "KNIGHTS"
2nd Half Play by Play

PAGE : 2

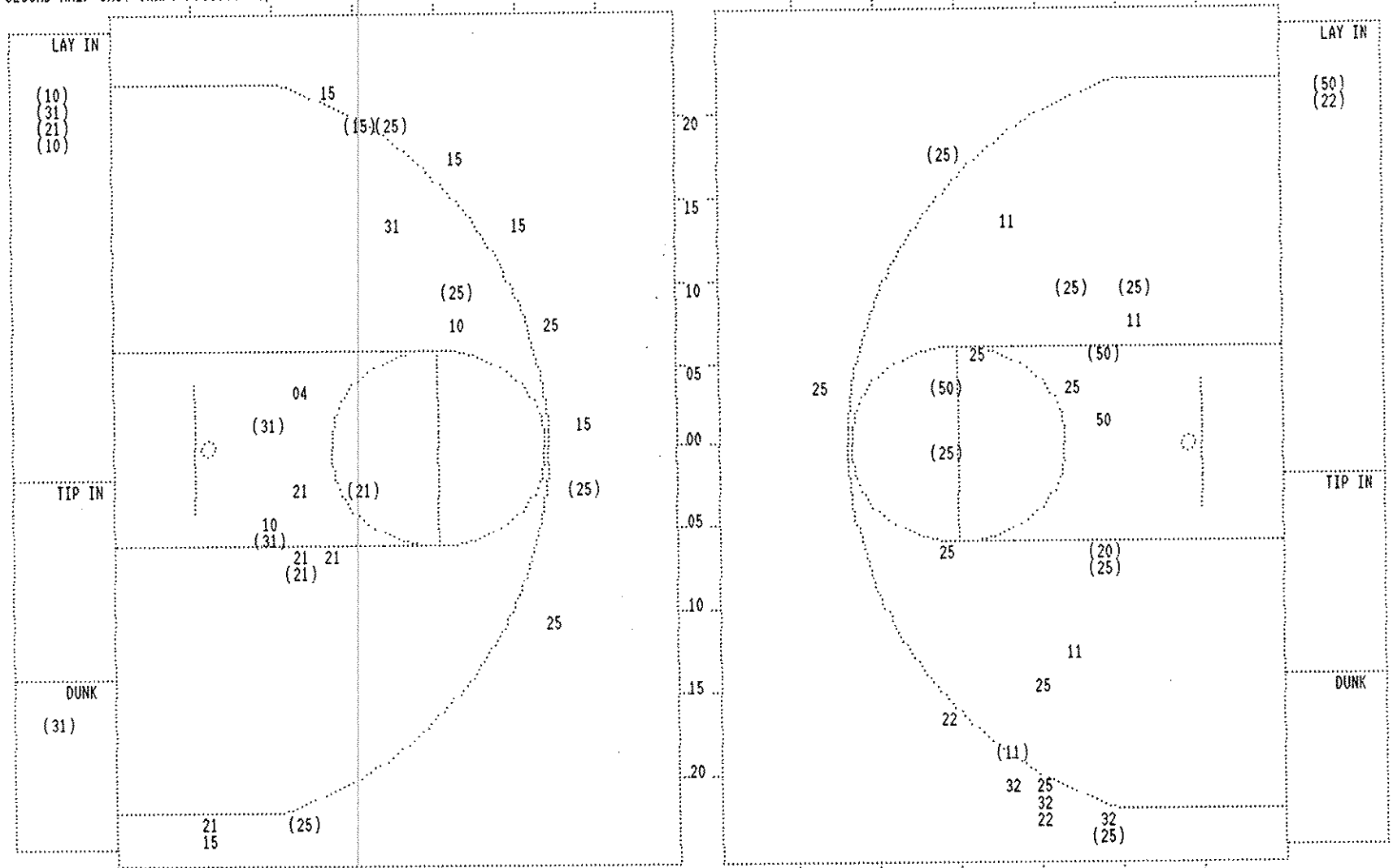
Tip off at 11:55 A.M. on 03/20/93 at BOYS STATE TOURNEY GM 14
Produced by the KHSAA Sweet Sixteen Stat Crew with FINAL III - a Product of LEXI

Player	Team	MARION COUNTY
BIGGERS,VINCENT,ENGLISH,DERRICK,DOUGLAS,MICHAEL,EPPS, ANTHONY,SCOTT, ELTON		
6-7	85.7%	22-47 46.8%
4	12	Driving Layup by ENGLISH,DERRICK
2	5	Assist by SCOTT, ELTON
		Foul on SCOTT, ELTON
7-8	87.5%	23-49 46.9%
		3 ft Lane Follow by ENGLISH,DERRICK
4-9	44.4%	24-50 48.0%
3	13	Driving Layup by SCOTT, ELTON
		Assist by ENGLISH,DERRICK
2-4	50.0%	25-51 49.0%
		Layup Off Fast Break by BIGGERS,VINCENT
5-10	50.0%	26-52 50.0%
		7 ft Left Side Jump shot by SCOTT, ELTON
8-16	50.0%	27-55 49.0%
5	14	3 pt 22 ft Right Side Jump shot by EPPS, ANTHONY
2	6	Assist by SCOTT, ELTON
		Foul on BIGGERS,VINCENT
3	7	Foul on SCOTT, ELTON
3	8	Foul on BIGGERS,VINCENT
REB: 28 A: 14 BLK: 1 TO: 8 PF: 8 S: 6 FT: 1-2 50.0% FG: 27-57 47.3% No. 1 MARION COUNTY		
1-2	50.0%	2-4 50.0%
0-1	Tot-1	0-1 Tot-29
		EPPS, ANTHONY, 1 & Bonus made 1st missed 2nd
		Rebound by BIGGERS,VINCENT
2	9	Forced Turnover BIGGERS,VINCENT
8-10	80.0%	28-58 48.2%
6	15	Dunk Off Fast Break by ENGLISH,DERRICK, made
		Assist by SCOTT, ELTON
0-1	Tot-1	0-1 Tot-30
		Rebound by ENGLISH,DERRICK
1-3	33.3%	2-5 40.0%
		EPPS, ANTHONY, 1 & Bonus missed 1st

Time	Score	MALE	Player	Team
WORDLOW, ANTUAN,MARTIN, DAVID,OSBORNE, JASON ,EDELEN, DANNY,SHEE, DAVID				
Ball to BULLDOGS				
4	7:39	53-52*	12 ft Left Side Jump shot by OSBORNE, JASON	8-17 47.0% 20-43 46.5%
4	7:14	*55-52		
4	6:51			
4	6:51	55-53*	OSBORNE, JASON , 2 Free Throws missed 1st made 2nd	5-7 71.4% 10-13 76.9%
4	5:59	*57-53		
4	5:49		Foul on EDELEN, DANNY	1 5
4	5:49		Sub In: BIBB, DON Out: WORDLOW, ANTUAN	
4	5:49		Sub In: GIVENS, NATE Out: EDELEN, DANNY	
4	5:49	*59-53		
4	5:20	*61-53		
4	4:55	61-55*	7 ft Lane Follow by BIBB, DON	1-2 50.0% 21-45 46.6%
4	4:30	*63-55		
4	3:12		Sub In: EDELEN, DANNY Out: GIVENS, NATE	
4	3:22	*66-55		
4	3:16			
4	2:53	66-57*	SHEE, DAVID, 2 Free Throws made both	4-4 100% 12-15 80.0%
4	2:53			
4	1:48		3 pt 22 ft Right Side Jump shot by OSBORNE, JASON , missed	8-19 42.1% 21-47 44.6%
4	1:45		Rebound by OSBORNE, JASON	0-1 Tot-1 0-1 Tot-28
4	1:42	66-59*	7 ft Lane Follow by OSBORNE, JASON , made	9-20 45.0% 22-48 45.8%
4	1:40			
4	1:40	66-60*	OSBORNE, JASON , 1 Free Throw made	6-8 75.0% 13-16 81.2%
4	1:27		Foul on WORDLOW, ANTUAN	2 6
4	1:22		Foul on EDELEN, DANNY	2 7
4	1:21			
REB: 28 A: 12 BLK: 3 TO: 10 PF: 7 S: 6 FT: 13-16 81.2% FG: 22-48 45.8%				
4	1:21	*67-60		
4	1:17			
4	1:15		Steal by EDELEN, DANNY	1 7
4	1:14			
4	1:13	67-62*	Layup Off Fast Break by EDELEN, DANNY, made	1-4 25.0% 23-49 46.9%
4	1:07	*69-62		
4	1:00		3 pt 23 ft Right Side Jump shot by EDELEN, DANNY, missed	1-5 20.0% 23-50 46.0%
4	0:57		Rebound by OSBORNE, JASON	0-2 Tot-2 0-2 Tot-29
4	0:53		3 pt 22 ft Right Side Jump shot by SHEE, DAVID, missed	2-6 33.3% 23-51 45.0%
4	0:51			
4	0:47		Foul on EDELEN, DANNY	3 8
4	3:16		Sub In: WORDLOW, ANTUAN Out: BIBB, DON	
4	0:47		Sub In: GIVENS, NATE Out: EDELEN, DANNY	

Player	Team	MARION COUNTY	Time	Score	MALE	Player	Team
			4 0:46		Rebound by OSBORNE, JASON	D-1	Tot-3
			4 0:33	69-65*	3 pt 23 ft Left Side Jump shot by OSBORNE, JASON, made	10-21	47.6%
					Assist by MARTIN, DAVID	24-52	46.1%
						1	13
4	10	Out-of-Bounds by SCOTT, ELTON	4 0:26				
2	9	Foul on EPPS, ANTHONY	4 0:20				
		REB: 30 A: 15 BLK: 1 TO: 10 PF: 9	4 0:20		REB: 30 A: 13 BLK: 3 TO: 10 PF: 9		
		S: 6 FT: 2-5 40.0% FG: 28-58 48.2%	No. 2 MARION COUNTY	T I M E - O U T	S: 7 FT: 13-16 81.2% FG: 24-52 46.1%		
			4 0:20		Sub In: EDELEN, DANNY Out: GIVENS, NATE		
			4 0:20		OSBORNE, JASON, 1 & Bonus missed 1st	6-9	66.6%
			4 0:18			13-17	76.4%
D-1	Tot-1	D-2 Tot-31 Rebound by SCOTT, ELTON	4 0:18		Foul on MARTIN, DAVID	3	9
			4 0:18		Sub In: BIBB, DON Out: MARTIN, DAVID		
2-2	100%	4-7 57.1% SCOTT, ELTON, 1 & Bonus made both	4 0:18	*71-65			
			4 0:08	71-68*	3 pt 22 ft Right Side Jump shot by OSBORNE, JASON, made	11-22	50.0%
					Assist by EDELEN, DANNY	25-53	47.1%
						9	14
		REB: 31 A: 15 BLK: 1 TO: 10 PF: 9	4 0:07		REB: 30 A: 14 BLK: 3 TO: 10 PF: 9		
		S: 6 FT: 4-7 57.1% FG: 28-58 48.2%	T I M E - O U T	MALE No. 1	S: 7 FT: 13-17 76.4% FG: 25-53 47.1%		
			4 0:04		Foul on SHEE, DAVID	2	10
		REB: 31 A: 15 BLK: 1 TO: 10 PF: 9	4 0:04		REB: 30 A: 14 BLK: 3 TO: 10 PF: 10		
		S: 6 FT: 4-7 57.1% FG: 28-58 48.2%	No. 3 MARION COUNTY	T I M E - O U T	S: 7 FT: 13-17 76.4% FG: 25-53 47.1%		
4-4	100%	6-9 66.6% SCOTT, ELTON, 1 & Bonus made both	4 0:04	*73-68			
			4 0:00		3 pt 22 ft Right Side Jump shot by SHEE, DAVID, missed	2-7	28.5%
			4 0:00		Rebound by WORDLOW, ANTUAN	0-1	Tot-1
			4 0:00		8 ft Left Side Follow by WORDLOW, ANTUAN, missed	0-3	Tot-31
			4 0:00			3-8	37.5%
1	2	Block by ENGLISH, DERRICK	4 0:00		Rebound by TEAM	25-55	45.4%
			4 0:00			D-1	Tot-1
						D-2	Tot-32

SECOND HALF SHOT CHART Produced by the KHSAA Sweet Sixteen Stat Crew with FINAL III - a Product of LEXICON SPORTS*



MARION COUNTY				
Player			Player	
04 - CRUME, ALE	0 / 1	0.0%	31 - ENGLISH, DE	4 / 5 80.0%
21 - SCOTT, ELT	3 / 7	42.8%		
15 - DOUGLAS, MI	1 / 6	16.6%		
25 - EPPS, ANTH	4 / 6	66.6%		
10 - BIGGERS, VI	2 / 4	50.0%		
Layups	1-9 Ft	10-15 Ft	Over 15 Ft	3 Pointers Total
5 / 5	4 / 9	1 / 3	4 / 12	14 / 29
100.0%	44.4%	33.3%	33.3%	48.3%

MALE				
Player			Player	
11 - WORDLOW, A	1 / 4	25.0%	20 - BIBB, DON	1 / 1 100.0%
50 - MARTIN, DA	3 / 4	75.0%		
25 - OSBORNE, J	6 / 12	50.0%		
22 - EDELEN, DA	1 / 3	33.3%		
32 - SHEE, DAVI	0 / 3	0.0%		
Layups	1-9 Ft	10-15 Ft	Over 15 Ft	3 Pointers Total
2 / 2	3 / 6	4 / 7	0 / 2	3 / 10 12 / 27
100.0%	50.0%	57.1%	0.0%	30.0%